

History

A non-European society that provides contrasts with British history



The Mayan civilisation began in 1,100bc and ended in AD1502
The Mayans worshipped many Gods, who they believed they had to keep happy – or they would be punished.
The Mayans built simple houses using materials from the local forests.
The Mayans were a clever people, who developed a sophisticated civilization.

Geography

Understand geographical similarities and differences through the study of human and physical geography of a region within North or South America.

- an ecosystem is a system of plants and animals which are interconnected and working together and an ecosystem covering a large area of a continent is called a biome



- A rainforest is an example of a biome
- There are four layers within a rainforest, each with their own characteristics
- There are similarities and differences between the UK and Central/South America
- The earth is split up into 24 different time zones

RSHE

Their emotions may change as they approach and as they grow and move through puberty

To extend their vocabulary to deepen their understanding of the range and intensity of their feelings

What positively and negatively affects their physical, mental and emotional health (including the media)

To recognise how images in the media do not always reflect reality and can affect how people feel about themselves

English

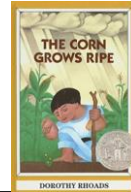
- Letter explaining need for help from the 'medicine man'
- Non-chronological report
- Descriptive writing
- Diary
- Leaflet

Who were the Mayans?

The Corn Grows Ripe

by

Dorothy Rhoads



Rainplayer

By

David

Wisniewski

Hook

Tropical World - Roundhay Park, Leeds

P.E.

Gymnastics



Art/DT



Mayan masks – Sketch designs ('event' or 'death' mask). Make mask (papier mache).

Computing

Film Making and Green Screen

Science

- adaptation helps plants and animals to survive
- we can get information about evolution by examining fossils and comparing them to their living relatives
- some adaptations are deliberately caused by human intervention
- describe how living things are classified into broad groups according to common observable characteristics and based on similarities and differences, including microorganisms, plants and animals
- give reasons for classifying plants and animals based on specific characteristics.

Maths

(White Rose)

Number: Place Value

Number: Addition, Subtraction, Multiplication, Division

Music

Charanga –
Rainforest song/rap

Science



Associate the brightness of a lamp or the volume of a buzzer with the number and voltage of cells used in the circuit

Compare and give reasons for variations in how components function, including the brightness of bulbs, the loudness of buzzers and the on/off position of switches

Use recognised symbols when representing a simple circuit in a diagram.

History

A study of an aspect or theme in British history that extends pupils' chronological knowledge beyond 1066

- The Battle of Britain was a turning point in World War 2.



RSHE

Self-giving, able to put aside their own wants in order to serve others locally, nationally and globally

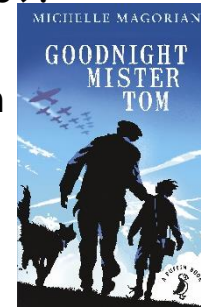
Prophetic in their ability to identify injustice and speak out against it locally, nationally and globally

English

- Persuasive leaflet/poster
- Letter writing
- Descriptive writing/poetry
- using figurative language

How has life in Britain changed since 1939?

Goodnight Mr Tom
by
Michelle Magorian



Hook

Trip to the Stockport Air-raid shelters/Avro Heritage Centre

P.E.

1940's dance



Art/DT

- Battle of Britain silhouette images
- Design and make a nightlight



Computing

Animate a story

Geography

- name and locate counties and cities of the United Kingdom, geographical regions and their identifying human and physical characteristics



Maths

(White Rose)

Fractions

Geometry: Position and direction

Music

Charanga unit 2
Singing and performing

History

The Viking and Anglo-Saxon struggle for the Kingdom of England to the time of Edward the Confessor

Viking raids and invasion

Resistance by Alfred the Great and Athelstan, first king of England

Further Viking invasions and Danegeld

Edward the Confessor and his death in 1066



Geography

- locate the world's countries, using maps to focus on Europe

- use maps, atlases, globes and digital/computer mapping to locate countries

RSHE

How to make informed choices in relationships and that choices have positive, neutral and negative consequences

An awareness of bullying (including cyber-bullying) and how to respond

About harassment and exploitation in relationships, including physical, emotional and sexual abuse and how to respond

To recognise and manage risk, to develop resilience and learn

English

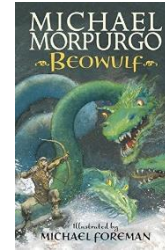
- Re-tell and write own 'traditional tale'

- Formal letter – advice to the King

Short burst writing

Were the Vikings always vicious and victorious?

Beowulf by Michael Morpurgo



Hook

Visit from a Viking

P.E.

Invasion games- research project linked with the meaning of invasion

Art/DT

Jelling/Ringerike (sketching)

Using clay coils to create simple Viking pots



Computing

Spreadsheets

Maths

(White Rose)



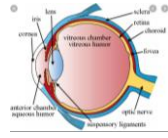
Number: Decimals
Number: Percentages
Algebra

Music

Charanga unit 3
Playing instruments



Science



- Light travels in straight lines
- light travels in straight lines to explain and objects are seen because they give out or reflect light into the eye.
- we see things because light travels from light sources to our eyes or from light sources to objects and then to our eyes.
- light travels in straight lines; this explains why shadows have the same shape as the objects that cast them.

Geography

- We can use eight points on a compass to and six-figure grid references to locate places and describe where they are
- symbols and keys, on maps, can help us learn about places

RSHE

That there are some cultural practices which are against British law and universal rights and are crimes. Learn how to get support if they have fears for themselves or their peers

About the range of national, regional, religious and ethnic identities in the United Kingdom and beyond and the importance of living in right relationship with one another

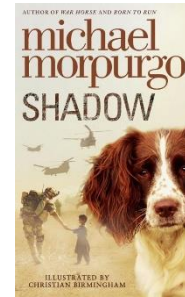
English

'Shadow' - Michael Morpurgo

- Newspaper report
- Playscript
- **DADWAVERS!**

How do we see?

Shadow by
Michael
Morpurgo



Hook

Visit to the Fusilier Museum, Bury/Visit from a veteran

P.E.

Dance – Shadows
Gymnastics - Movement

Art/DT



- Painting in the style of Paul Cezanne – 'looking through the window' art to depict Aman's journey as the story develops.

Computing

Scratch



Maths

(White Rose)

Measurement: Converting units
Measurement: Area, perimeter and volume
Ratio

Music

Charanga unit 1
Reading music



Science



- offspring bear similarities to their parents
- Living things can be grouped into different categories.
- Living things are classified into groups based on observable characteristics
- Some microorganisms are helpful, but some are harmful.
- The heart pumps the blood around the body.
- The blood vessels carry the blood around the body.
- The blood brings oxygen and nutrients to all the parts of the body so they can keep working. It also carries carbon dioxide and other waste materials to the lungs, kidneys and digestive system to be removed from the body.
- The body requires different nutrients to be healthy.
- The body breaks the nutrients down and transports them to the part of our body that needs it.
- Regular exercise and a balanced diet is important to keep us healthy.
- Drinking alcohol can have an effect on physical and mental health.
- Smoking is harmful to the smoker and others around them.
- Taking illegal drugs poses lots of risks to our health and lifestyle.

Maths (White Rose)

Geometry: Properties of shapes
Problem solving
Statistics



Music

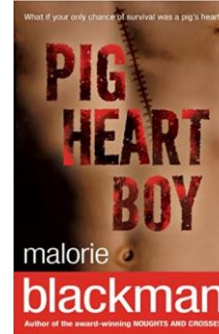
Charanga unit 4
Singing and performing

English

Auto Biography
Balanced Argument/Persuasion

Who are you?

Pig heart boy
by
Malorie Blackman



Hook

Trip to 'Crucial Crew'



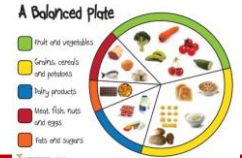
P.E.

Health and fitness

Netball

Art/DT

- Cooking and nutrition: understand and apply the principles of a healthy and varied diet: Work within a budget to create a meal, then revise the meal, making healthier choices



Computing

Google classroom

RSHE

How a baby grows and develops in its mother's womb
To recognise the differences that occur at each stage of a human being's development (including childhood, adolescence, adulthood, older age)

Fertility

The nature and role of menstruation in the fertility cycle
How human life is conceived in the womb, including the language of sperm and ova
To recognise and manage risk, to develop resilience and learn how to cope with "dares" and other ways in which people can be pressurised

That some behaviour is unacceptable, unhealthy or risky
Strategies to build resilience in order to identify and resist unacceptable pressure from a variety of sources

Self-disciplined and able to delay or forego gratification for the sake of greater goods